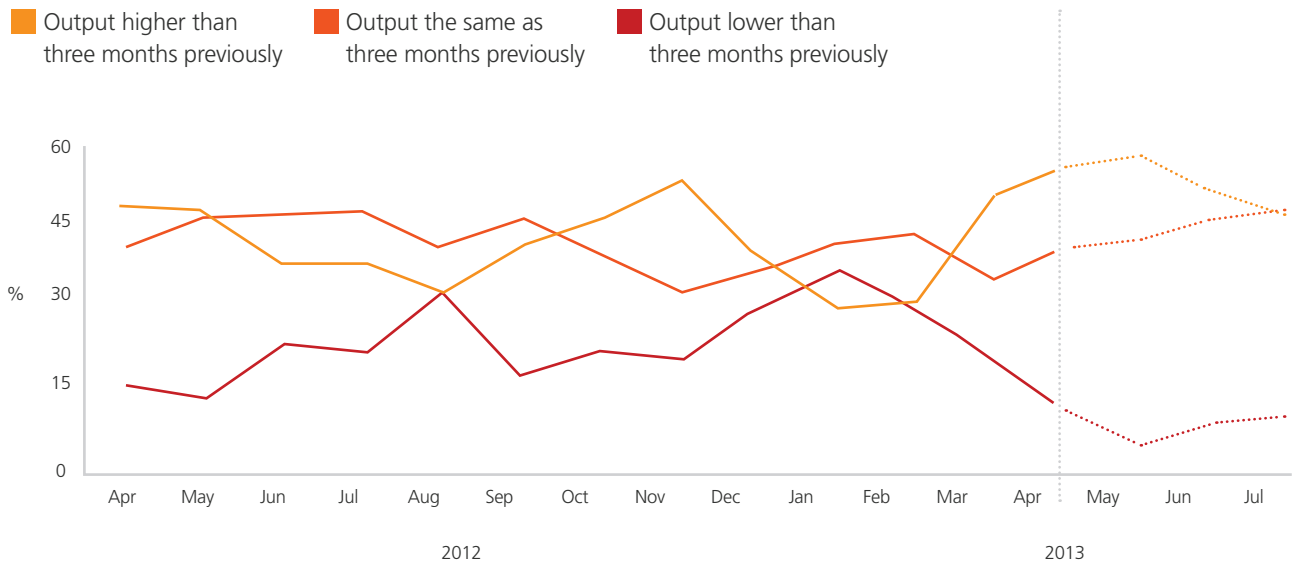


English Business Survey

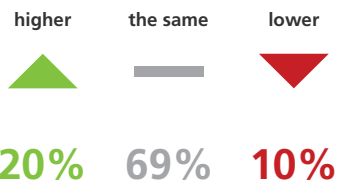
Published 26th June 2013

Levels of output/business activity compared to three months previously

Expected level of output/business activity in three months time



Employment



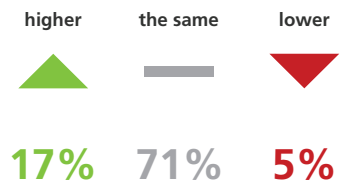
Number in employment compared to three months previously

20% 69% 10%

Number in employment in three months time

20% 71% 8%

Prices



Looking back three months

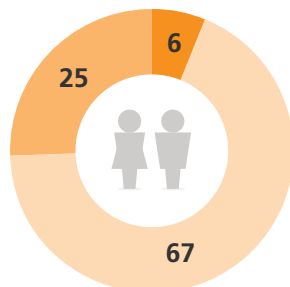
17% 71% 5%

In three months time

12% 76% 4%

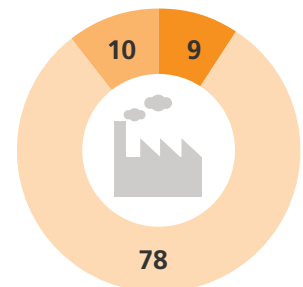
Workforce %

- Underutilised
- Satisfactory
- Overstretched



Capital %

- Underutilised
- Satisfactory
- Overstretched



To view the latest results go to: www.bit.ly/ZTTCLo

Base: All businesses in England (c. 3,000 per month), Data are weighted to be representative of total employment in England